

## POWER VISION INSTALLATION INSTRUCTIONS

**Models:** 6421T GM/Chevrolet 2007 – current (new body style) full size trucks and SUVs **with stock power folding (DL3) mirrors.**

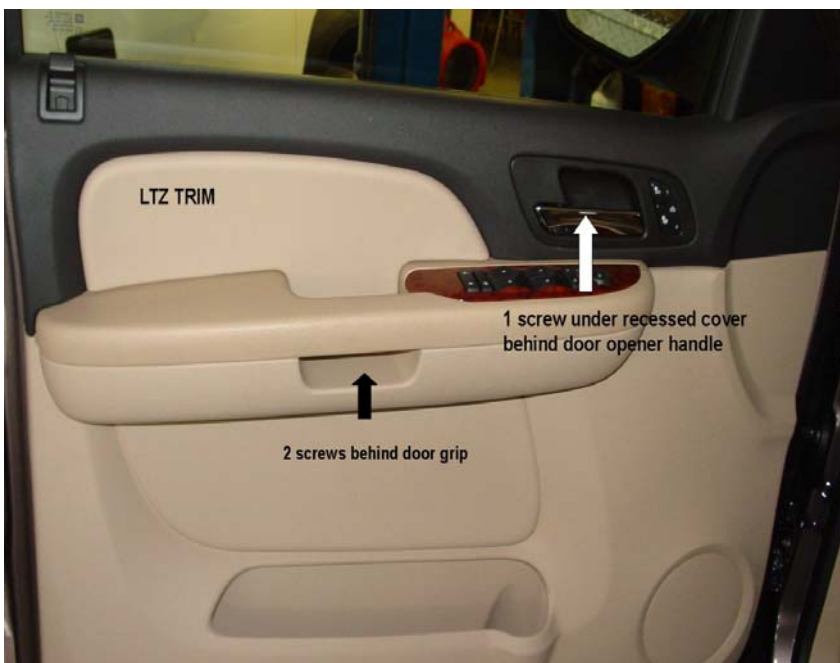
NOTE: Power Vision mirrors will extend fully or retract fully when the switch is pushed that was previously controlling the power fold. When extending or retracting the mirrors, there will be a slight (approx. 4 to 5 second) delay when they reach the end of the traverse arm before the motor shuts off, this is normal.

**THIS MODEL IS DESIGNED TO REPLACE POWER FOLD MIRRORS. IF YOU DO NOT CURRENTLY HAVE POWER FOLD MIRRORS, THE WRONG SET HAS BEEN ORDERED.**

Tools required for the installation are: 7mm and 10mm sockets, trim panel remover, philips screwdriver, small screwdriver, needle nose pliers, and an inch pound torque wrench. If you have any questions after reading this installation manual, please call our service department at (800) 337-2557.

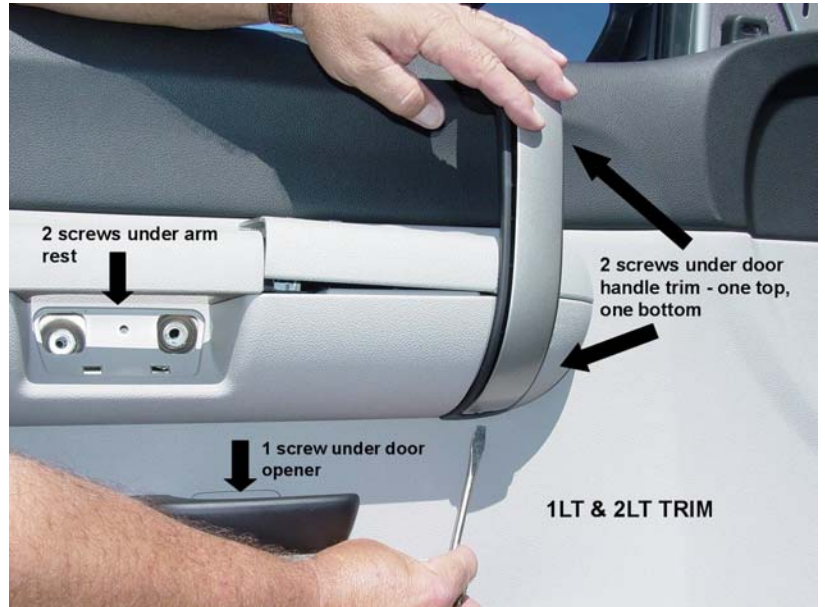
### REMOVAL OF EXISTING MIRRORS

1. On the inside of the driver's door, remove the triangular shaped trim piece and insulation foam in the mirror mounting area.
2. Remove the door lock by using a small screwdriver to release the tab while lifting the lock upward.
3. Remove door trim panel screws:  
LTZ trim: Remove the two screws behind the door grip and one screw under the door opening handle.



LT trim: Remove the two screws behind the arm rest, two screws on the door handle, and one under the door opener. The screws on the door handle are located under the door handle trim piece. The trim piece can be unsnapped by gently using a small screwdriver.

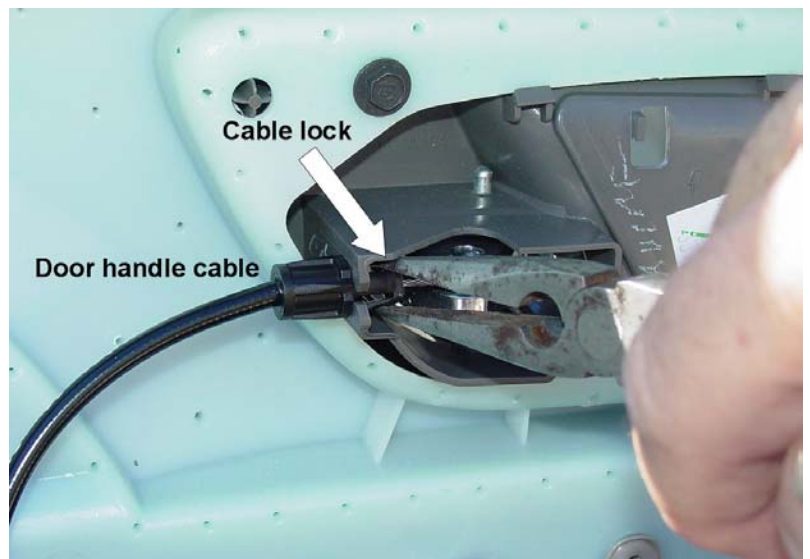
4. The door trim panels have a series of snaps around the outer edges. Unsnap the door trim panel.



5. Remove the door trim panel:

LTZ trim: Unplug the window control panel. Release the door handle cable by compressing the cable lock with needle nose pliers (as shown), rotate until ball lines up with the slot, then lift upward. Remove the trim panel.

LT trim: Unplug mirror from wiring harness located under the control panel. Release the door handle cable by compressing the cable lock with needle nose pliers (as shown), rotate until the ball lines up with the slot, then lift upward. Remove the trim panel.

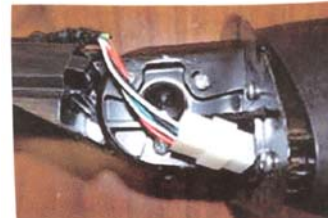


6. Support the stock mirror while removing the 3 mirror mount lug nuts using a 10mm socket. Save the stock nuts for later in the install.
7. Release the clip at the top of the mirror door bracket (as in photo). Remove the stock mirror. Save the stock gasket and nuts, as they will be reused.
8. Repeat this process for the passenger side.



ASSEMBLY AND MOUNTING POWER VISION MIRRORS:

1. Attach the mirror door mount bracket (“mount”) to the mirror using 3 of the #8 screws with yellow patch provided in the hardware bag. (Note: This is also where you can adjust the sweep of the mirror in relation to the door later on if necessary.)

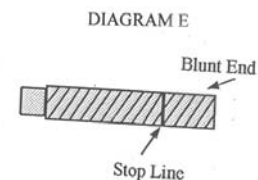


2. Plug the cord coming through the mount into the cord under the boot.

3. Place the open end of the boot around the lip on the mount to hold it in place.



4. Insert the studs provided (3 for each side) with the tapered end out (see diagram E). They should screw into the mount up to the stop line – approx. 1cm or 3/8 of an inch. Next, line up the mount with the stock gasket and apply the mount to the door. While supporting the mirror add the stock nuts. Tighten the stock nuts to 70 inch pounds. This gasket is necessary for sealing against moisture and wind noise and to keep from metal to metal contact. (Hint, taping the outer gasket to the edge of the mount, if necessary, will assist holding it in place.) After the mirror has been mounted simply cut the tape and peel it off of the mount.

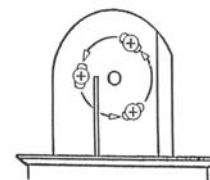


5. Plug the Power Vision mirror into the slot in the control panel that the stock mirror was plugged into.
6. Repeat this process for the passenger side.
7. Reconnect the battery and test all of the mirror functions before replacing the trim panels. Reconnect the door handle cable.

NOTE: The Power Vision mirrors will extend fully or retract fully when the switch is pushed that was previously controlling the power fold. When extending or retracting the mirrors, there will be a slight (approx. 4 to 5 second) delay when they reach the end of the traverse arm before the motor shuts off, this is normal.

ADJUSTMENTS AND MAINTENANCE

1. The mirror assemblies can be swept closer or further from vehicle door. This is accomplished by sliding the black rubber boot off of the mount (toward the mirror) to reveal the inner side of the mount. Three screws going into oval slots will be visible (see diagram). WHILE SUPPORTING THE MIRROR ASSEMBLY, loosen the three screws, you will feel the notches as you slowly move the mirror assembly. After adjusting the mirror to your satisfaction, carefully



tighten the screws back down. The torque for the three screws is 25 inch pounds, DO NOT exceed this torque setting or damage to the knuckle may result. The rubber must then be put back in place. Repeat this process with passenger door.

2. No lubricant should be applied to or sprayed on any of the integral parts of this mirror.
3. Do not attempt to manually extend or retract the mirrors. They should be moved under their own motor power only.